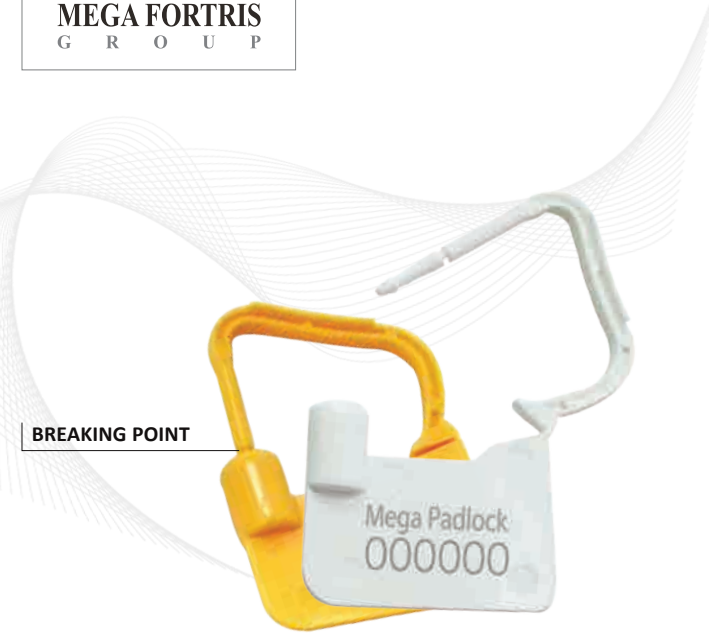


Indicative Seal · Data Sheet

Mega Padlock



Cost-Effective, User-Friendly Mega Padlock Seal

Slim, flat, and user-friendly, the Mega Padlock seal is especially popular in the airline, food catering, utility and communication industries. Not only is it light and durable, it is easy to apply and remove.

The plastic seal is very slim, which makes it suitable for applications such as securing electric utilities, cash boxes, airline food, sales trolleys, and carts. The seal sits flat when locked and is therefore ideal for applications that are stowed away or might be handled roughly. The Mega Padlock has ample marking space for laser-etched customization.

Features

- 1 The Mega Padlock seal is etched with permanent laser marking for customized names, logos, barcodes and sequential numbers for security and easy identification.
Laser marking offers the highest level of security as it cannot be removed or replaced without showing clear signs of tampering.
- 2 With a slim body, the Mega Padlock fits many applications and lies flat for efficient storage.
- 3 It is easy to apply and remove, and is designed to be closed with one hand.
- 4 Marking on both sides are available.

Technical Specifications

PRODUCT

Material	Locking Space	Tensile Strength	Marking Area	Max Marking Digits
Body: PP Copolymers Locking Insert: POM (Acetal)	23 x 14mm (0.91 x 0.55 in)	8 kg (17.64 lbf)	Body: 20mm x 10mm (0.79 x 0.39 in)	Serial No: 10 Barcode: 9 (White, Yellow only)

OUTER CARTON

Carton Quantity	Dimensions	Weight kg/carton	Volume m ³ /carton	Standard Colours
1000 pcs	284 x 254 x 299 mm (11.2 x 10 x 11.8 in)	2.8kg (6.2lbs)	0.02157 m ³ (0.7617 ft ³)	



FMM EXCELLENCE AWARD 2012
QUEST FOR CONTINUOUS IMPROVEMENT
BEST MANUFACTURER IN MALAYSIA IN 2012