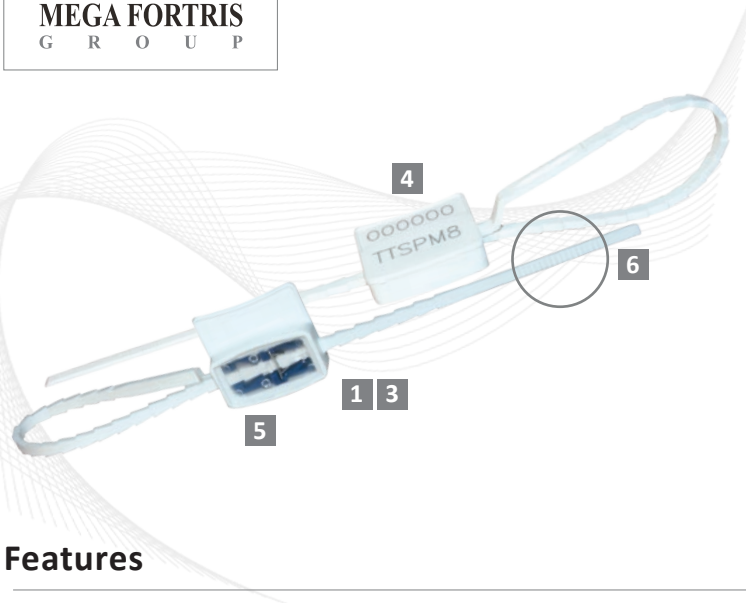


Indicative Seal · Data Sheet

# Triple Tight SP M



## Triple Locking, Pull-tight Seal

The special M version of the Triple Tight SP seal is equipped with an advanced floating mechanism and a metal clip to enhance locking strength and security. The seal is user friendly and comes with the option of colour coding with its acetal inserts that come in a variety of colours.

Typical applications for the Triple Tight SP M seal includes securing high-value goods for banks and security companies, airlines, ground transportation, mail services, hospitals, casinos, hotels and tankers.

### Features

- 1 The triple-locking mechanism maintains the secure sealing even if sudden assertive force is applied.
- 2 A metal clip provides great locking strength and security.
- 3 Ultrasonic welding technology is used to fastened caps to seals. Ultrasonic welding cannot be cut or forced open without leaving clear evidence of tampering.
- 4 Finger grips at the end of the tail make the seal easy to apply even in extreme temperatures.
- 5 Triple Tight Seals are etched with permanent laser marking for names, logo, sequential numbers and barcodes. Laser marking offers the highest level of security as it cannot be removed or replaced.
- 6 The inspection window is a unique feature which enables quick and easy visual checking of the locking mechanism.

### Technical Specifications

#### PRODUCT

Product	Material	Locking Length	Strap Dimensions	Pull Strength	Marking Area	Max Marking Digits
TTSPM 8"	PP / Nylon with acetal	200 mm	2.0 x 4.0 mm	24 kg (PP) / 28 kg (NY)	<b>Cap:</b> 10 x 22 mm	8
TTSPM 10"	PP with acetal	250 mm	2.0 x 4.0 mm	24 kg (PP) / 28 kg (NY)	<b>Flap:</b> 7 x 24 mm	8

#### INNER CARTON

Product Code	Carton Quantity	Dimensions mm	Weight kg/carton	Volume m <sup>3</sup> /carton
TTSPM 8" PP	1,000	424 x 294 x 160	3.88	0.01994
TTSPM 8" NY	1,000	424 x 294 x 160	4.66	0.01994
TTSPM 10" PP	1,000	480 x 290 x 150	4.36	0.02088

#### OUTER CARTON

Carton Quantity	Dimensions mm	Weight kg/carton	Volume m <sup>3</sup> /carton
5,000	876 x 437 x 307	19.30	0.11752
5,000	876 x 437 x 307	23.30	0.11752
5,000	760 x 485 x 313	21.80	0.11537

#### Standard Colours

Body (with white or transparent caps)



**FMM EXCELLENCE AWARD 2012**  
QUEST FOR CONTINUOUS IMPROVEMENT  
BEST MANUFACTURER IN MALAYSIA IN 2012